

JAFRI AND ASSOCIATES



IBRAHIM TRADE TOWER ROOM #
206, MAQBOOL
CO-OPERATIVE HOUSING
SOCIETY, SHARAE FAISAL,
KARACHI, PAKISTAN
92-21-34327671-4
INFO@JA.ASSOCIATES



Chairman, Chief Executive Officer
Engr. Syed Tanveer Ahmed Jafri



BIOGRAPHY

Syed Tanveer Ahmed Jafri is a well-respected leader in the engineering field with more than 25 years of comprehensive experience. He has a demonstrated history of managing multicultural teams on international projects spanning 67 countries. Mr. Jafri is recognized as a specialist in the development of energy projects, including power transmission, onsite power generation, energy efficiency, and large-scale grid-connected projects involving hydroelectric, biomass, wind, solar, gas, oil, and coal-based energy sources. He has designed, built, or managed multimillion-dollar projects globally and has a working understanding of utility, state, and federal government

"I am incredibly proud to take on the role of CEO of Jafri and Associates. While the passing of my father has been a difficult and emotional time for us all, we know that it is time to step up and lead the company into a new era. I am deeply humbled and honored by the trust placed in me, and I'm determined to continue my father's legacy and build upon the strong foundation that has been laid. I am excited for the future of the company and eager to drive it forward into new levels of success."

procurement procedures. Worked on energy projects totaling more than 17 GW and \$10 billion in value worldwide. In 2010, Mr. Jafri was recognized as a Legend of Energy. by Association of Energy Engineers (AEE-USA). With hands-on experience working on projects funded by IFIs and international private equity. Mr. Jafri has worked at a senior level in manufacturing and new product development for Fortune 100 companies such as GM, Ford, and Cummins.

SKILLS

He has proven managerial skills and has successfully managed individual sales, engineering, and operations groups, as well as being a general manager of complete P&L units. He has served in both line and staff management roles and is an expert in complex project development and execution, including prime and subcontracting for complex construction, engineering, design, project management, contract management, and owner engineering. In addition to his technical expertise, he has a deep understanding of project finance, P3, and ESPC mechanisms and is skilled in risk management strategies. He has strong development skills and a proven ability to coach, manage business development, and negotiate complex deals.



CERTIFICATIONS

- MSc. Architectural Engineering (USA)
- BSc. Mechanical Engineering (USA)
- PE - Professional Engineer
- PMP - Project Management Professional
- LEED v4 - U.S. Green Building Council
- Lean Six Sigma Black Belt
- ISO/TS 16949 - Quality management systems
- ISO 1400 - Environmental management
- ISO 9001/QS 9000 - Quality Management

MEMBERSHIPS

- Life Member American Society of Mechanical Engineers (ASME) (USA)
- Life Member Association of Energy & Environmental Engineering (USA)
- Life Member Association of Energy Engineers (AEE) (USA)
- Life Member Association of Cogeneration & Distributed Generation (USA)

"As the COO of J&A for nearly a decade, I am incredibly proud of the work that our team has done to build a technologically advanced future for our clients. Looking towards the future, I am excited to see what new heights J&A will reach as we continue to push the boundaries of what is possible."

- Chief Operating Officer, Engr. G.R. Bhatti

J&A OFFERS SERVICES RELATED TO BUILDING ELECTRIFICATION, HVAC, ACOUSTIC, FIRE PROTECTION, POWER GENERATION, TRANSMISSION AND DISTRIBUTION, THE DESIGN AND MANAGEMENT OF BUILDING SYSTEMS, MANUFACTURING, AND PRODUCT ENGINEERING

• POWER GENERATION

- Energy Audit:
Identify opportunities to improve efficiency, reduce resource consumption, and save costs in engineering operations
- Feasibility Studies:
We will help you determine the viability of implementing a power generation system by conducting a comprehensive analysis of technical, financial, and regulatory factors.
- Green Retrofit:
Identify opportunities to improve efficiency, reduce resource consumption, and save costs in engineering operations
- Sector & Tariff Studies:
Analyze market and industry conditions, and assess pricing strategies, to support decision making, planning, and policy development in industry.
- Cogeneration:
Design and implement systems that generate electricity and heat simultaneously, using waste heat from power generation to provide heating, cooling, or hot water.
- Utility Change Management:
Support the planning and execution of changes to utility systems, including upgrades, expansions, migrations, and replacements.
- Integration:
Design and implement systems that integrate multiple components and technologies, such as renewable energy sources, energy storage, and building automation.

• TRANSMISSION & DISTRIBUTION

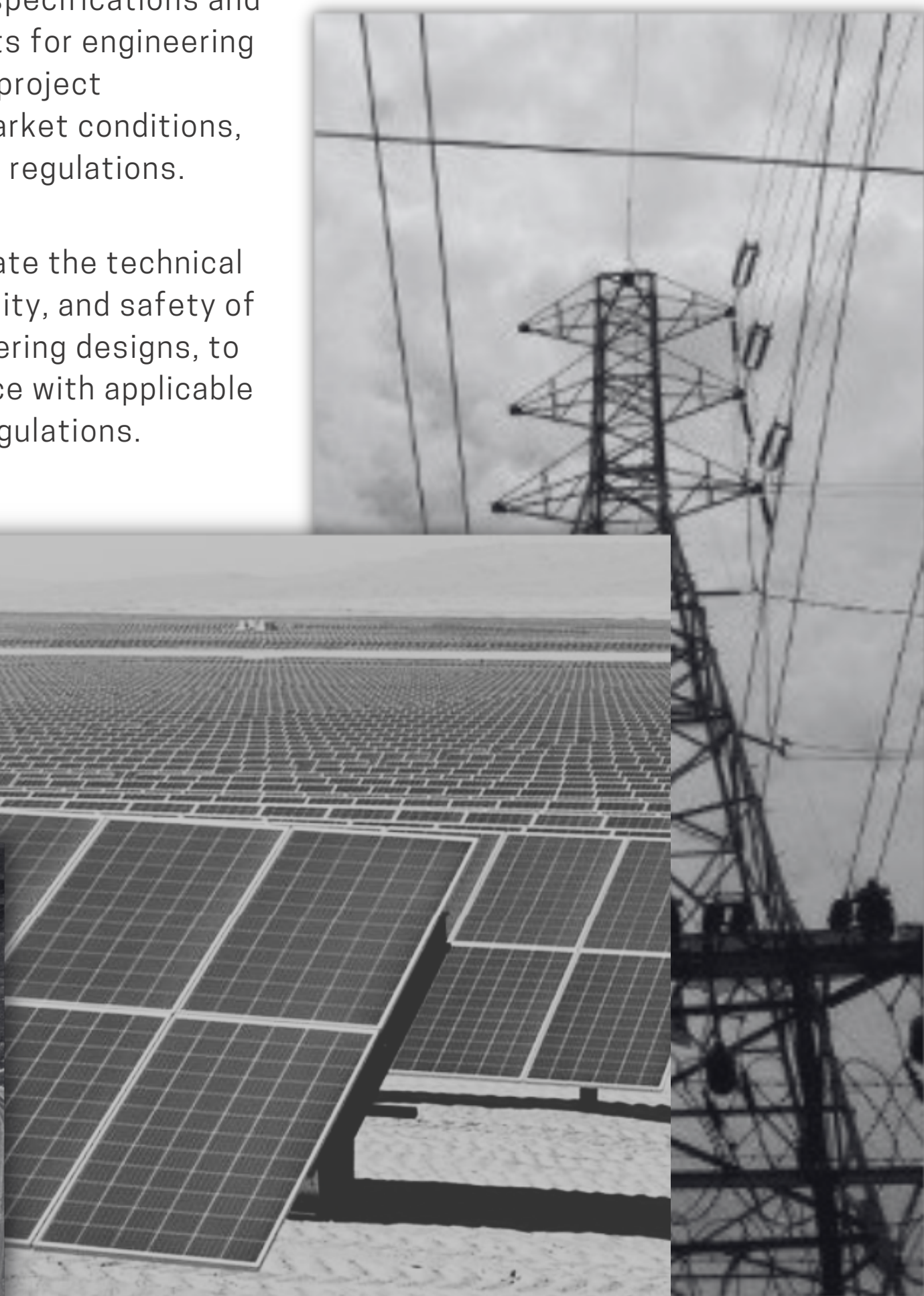
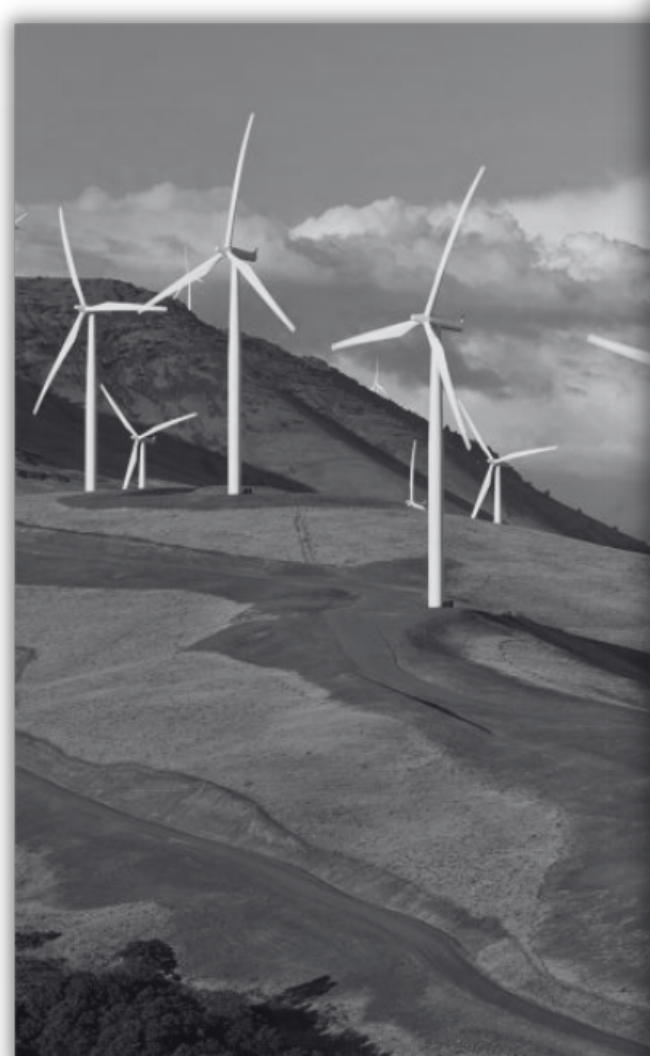
- Power System Analysis:
We offer comprehensive analysis of power systems to identify areas of improvement and recommend solutions. This includes load flow analysis, short circuit analysis, and stability analysis.
- Transmission Line Design:
We provide design services for transmission lines, including route selection, tower design, and construction supervision.
- Substation Design:
We offer design and engineering services for substations, including layout, protection, and control systems.
- Power System Planning:
Evaluate power plant connection requirements and identify impacts and reinforcement options for transmission providers, system operators, developers, and regulators.
- Transmission System Analysis:
Assess existing and planned transmission systems to ensure delivery of power from potential generators to target markets using scoping and fatal flaw analysis to determine best locations considering factors such as fuel availability, environment, regulations, and reliability.
- Expansion and Upgrades:
We assist clients in planning and designing their power systems, including the selection of equipment and the development of plans for expansion and upgrades.

• PROJECT MANAGEMENT

- Due Diligence:
Conduct independent assessments of the technical, financial, and contractual aspects of proposed or existing engineering projects; to support investment, financing, or regulatory decisions.
- Transaction Advisory:
Assist buyers, sellers, and investors in the acquisition, divestiture, or financing of engineering assets and businesses.
- Loss Evaluation:
Inform decision making and identify potential areas for improvement based on financial impact, accident, or malfunction on a particular system, project, or operation.
- Feasibility Studies:
Evaluate the potential costs, benefits, and risks of proposed projects, and recommend the most promising options.
- Documentation:
Create detailed specifications and tender documents for engineering works, based on project requirements, market conditions, and procurement regulations.
- Vetting:
Review and validate the technical adequacy, reliability, and safety of electrical engineering designs, to ensure compliance with applicable standards and regulations.

• BUILDING DESIGN & MANAGEMENT

- Building Design:
Our team of architects and engineers will work closely with you to design a building that meets your specific needs and requirements. We can provide both traditional and modern design solutions, and our team has expertise in a wide range of building types, including commercial, residential, and mixed-use developments.
- Energy Efficiency:
We can help you to design and manage your building in a way that minimizes its environmental impact and reduces energy consumption. Our team has expertise in the latest energy-saving technologies and can provide advice on how to incorporate them into your building design.



MARKETS

AUTOMOTIVE - HOSPITALITY - RESIDENTIAL - RETAIL



• MANUFACTURING ENGINEERING

- Product design and development: Create and bring new products to market. This may include prototyping, testing, and refining the design of a product.
- Failure analysis: Understand why a product or system has failed and identify ways to prevent future failures. This may involve testing and analyzing failed components to determine the cause of the failure.
- Material selection and testing: Select the right materials for products and ensure that those materials meet the necessary performance requirements.
- Thermodynamics/Energy analysis: Design and optimize systems that involve the transfer of heat and work. This may include analyzing the performance of HVAC systems and other mechanical systems.
- Finite element analysis (FEA): Analyze and optimize the performance of mechanical systems. This may include simulating the behavior of a system under various loading conditions and identifying areas of stress or failure.



• INSURANCE ENGINEERING

- Risk assessment and management: Evaluating the risks associated with a particular project or asset, and developing strategies to mitigate those risks. This might include conducting site inspections, analyzing historical data, and modeling potential scenarios.
- Property and casualty insurance: Secure insurance coverage for their property, including buildings, equipment, and inventory. Identify the most appropriate insurance coverage, and assist with the claims process in the event of a loss.
- Disaster recovery and business continuity: Develop plans to mitigate the impact of natural disasters or other events that could disrupt operations. Conduct risk assessments, develop contingency plans, and provide training to ensure preparation for a variety of potential disruptions.

• INDUSTRIAL

- Plant Design and Optimization:
- Our industrial engineering consultants provide expertise in the design and layout of industrial facilities, with a focus on improving efficiency and productivity.
- Maintenance and Reliability Engineering: We offer services to optimize the maintenance strategies for industrial machinery and equipment, with the goal of reducing downtime and increasing overall equipment effectiveness.
- Process Improvement and Lean Manufacturing: Implement Lean manufacturing principles and methodologies such as Six Sigma, to improve the overall performance and efficiency of industrial processes.



EDUCATION - INSTITUTIONAL - INDUSTRIAL - MEDICAL

PROJECTS

engro

MICHELIN



THE RITZ-CARLTON



50+ YEARS

Hard Rock

HOTEL & CASINO

Note: This list is meant to illustrate

01 RENEWABLE ENERGY

[Non-Public] Solar Power Project
Integrated Power Solution Ltd. Solar IPP
Sharmai Hydropower Project
Khairpur Special Economic Zone MSW/WTE
SolarBlue Ltd. Solar IPP
SSJD Power Plant Bio Mass IPP
Trans-Atlantic Energy Wind Power IPP

02 CONVENTIONAL ENERGY

Eeshatech Islamabad Pvt. Ltd.
IPP PMS Thermal Power Project (RFO)
IPP Quetta Thermal Power (Coal)
Continental Energy Thermal Power (RFO)
Japan Power Generation
KESC - Diesel Power Plants
National Industrial Parks, Bin Qasim Industrial Park.
National Industrial Parks, Korangi Creek Industrial Park
Pakistan Refinery Ltd.
Sindh Nooriabad Power Company, Phase I
Sindh Nooriabad Power Company, Phase II

03 CAPTIVE POWER: SELF AND CO-GENERATION

Aga Khan University Hospital Energy Audit
Artistic Milliner, Karachi
Asia Petroleum
Attock Cement Ltd.
Cherat Power Project
Crescent Industrial Chemical Complex, Winder-Hub
Ejaz Energy Power, Lahore
Elite Textile Mills, Karachi
Fashion Textile Mills
Fateh Textile Mills
Finance Trade Centre, Karachi
Globe Textile Mills, Landhi & Kotri
Gul Ahmed Textile Mills Ltd.
ICI Power Plant, Sheikhpura
Indus Dyeing and Manufacturing Company Ltd
Jubilee Textile Mills Power Plant, Karachi
Lahore University of Management Sciences
Lucky Textile Mills Power Plant
National Institute of Cardiovascular Diseases, Karachi
National Refinery Ltd. (Feasibility Studies)
Nishat Textile Mills Ltd, Faisalabad
Pakistan Refinery Ltd.
Pakland Cement Ltd.
PSO House Karachi
Saadi Cement Limited
Security Papers Ltd.
Shadman Power Ltd.
Shaukat Khanum Hospital and Research Centre, Lahore
Siddiq Sons Denim Ltd.
Sui Northern Gas Pipelines Building
Sui Southern Gas Pipelines Building

04 TRANSACTION ADVISORY SERVICES

Allahdin Power Plant, Private Equity
Dadu, NBP Bank
Fauji Kabirwala Combined Cycle Plant, US Investor
Kamoki Power Plant, Private Equity
Omni Power, NBP Bank
Saba Power Steam Turbine Power Plant, US Investor
Shikarpur, NBP
Sindh Nooriabad Power Company, Phase I and II
SSJD Power Plant Biomass, Private Equity
Thatta Power Plant, NBP

05 BUILDING SYSTEMS ENERGY/ELECTRICAL/FIRE/HVAC

A.A. Textiles and Ibrahim Textile Mills, Energy Audit
Aga Khan University Hospital, Energy Audit
ENERCON Power Factor Improvement Program USAID
Engro Chemical, Daharki
Fazal Textile Mills, Energy Audit
Marubeni & Company
Mitsui & Co. Ltd.
Pak Kuwait Investment Co.
Pak Kuwait Takaful Co. Ltd.
Pak Libya Holding Company
Pakistan Trading Corporation Pvt. Ltd.
Prime Minister's Secretariat, Energy Audit
Sui Northern Gas Pipelines, System Study
Trade Development Authority of Pakistan
Trading Corporation of Pakistan
Yousuf Dewan Group

06 LOW AND HIGH-RISE BUILDING PROJECTS

Administration Building, Karachi
Agricultural Development Bank of Islamabad
Auditorium of Federal Institute for Rural Development
Baluchistan Assembly Quetta
Bank of Credit & Commerce International, Rawalpindi
British Embassy, Immigration and Consular Building
Bulgarian Embassy, Islamabad
Chinese Embassy Building, Islamabad
Data Darbar Mosque, Lahore
Dolmen Mall
Extension of ADBP Islamabad
Finance Trade Center, Karachi
Glamour One, Karachi
Hasan Terrace, Karachi
High Court Building, Muzaffarabad
High Court Building, Peshawar
ICI Port Qasim, Karachi
Indonesian Embassy, Islamabad
Islamic Chamber Building, Karachi
Karachi Financial Tower (SFT)
KDA Multistoried Apartments, Karachi
N.P Water Proofing Project Hub
National Archives Building, Islamabad
National Assembly Building, Islamabad
National Bank of Pakistan
Naval Flats, Karachi
Nigerian Embassy, Islamabad
OPAL 225, Karachi
PIA Office building, Karachi
PIA Precision Engineering Complex, Karachi
PSPC Sprint Project (Computer Suit)
Pakistan Federal Cabinet Block Building, Karachi
Pakistan Secretariat Building, Islamabad
Prime Minister's Secretariat, Islamabad
PSO House, Karachi
Public Library Building, Peshawar
Quaid-e-Azam House, Karachi
SAARC Chamber of Commerce & Industry Islamabad Building
Shah Faisal Mosque, Islamabad
Sheikh Sultan Trust Commercial Building, Karachi
Sindh House, Islamabad
SNGPL Building
State Life Building, Islamabad
State Life Building, Lahore
State Life Building, Karachi
State Life Building Quetta,
State Life Building, Peshawar
Sui Southern Gas Company Building, Karachi

- NATURAL GAS - GEOTHERMAL - COAL - OIL

OF SERVICE

آغا خان یونیورسٹی
J&A's breadth and is not exhaustive.



STATE LIFE
INSURANCE CORPORATION OF PAKISTAN



500+
ENERCON
HOTELS &

08 HOSPITALITIES & SPORTS

Centaur Co-generation Power Plant, Islamabad
Flood Lighting Hockey Club of Pakistan Stadium, Karachi
Hotel Holiday Inn Multan
Karachi Golf Club
Malam Jabba Hotel, Swat
P.I.A. Hotel, Gilgit
Serena Hotels Faisalabad, Quetta

09 INDUSTRIAL PROJECTS

A.A. Textile Mills Ltd.
Abrosia International Fruit Juice Factory
Al-Ahmed Textile Mills
Amanat Leather Industries
Amin Textile Mills
Artistic Milliner
Asbestos Cement Industries Ltd.
Asia Petroleum Ltd.
Attock Cement Ltd.
Cherat Cement
Cotex Textile Mills
Crescent Industrial Chemical Complex, Winder-Hub
Crescent Industrial Chemical Ltd.
Crescent Sugar Mills
Crown Textile Mill Weaving Plant
Dewan Textile Mills.
Elite Textile Mills
Engro Chemical Network Study
Engro Chemical Pakistan Ltd.
Fashion Textile Mills
Fateh Textile Mills
Fazal Textile Mills Ltd.
Feroze Textile
G.M.D Factory Horizontal. Extension
General Tyre and Rubber Company of Pakistan Ltd.
Generators for Dewan Textile Mills
Globe Textile Mills, Landhi & Kotri
Gul Ahmed Textile Mills Ltd.
Gulshan Spinning Mills, Faisalabad
Gulshan Spinning Mills, Karachi
Harnid Flour Mills
Ibrahim Textile Mills Ltd.
ICI Port Qasim Karachi
ICI Pvt. Ltd.
Indus Dyeing and Manufacturing Company Ltd.
Island Textile Mills
Jubilee Textile Mills
Khalid Textile Mills
Lucky Textile Mills
Mahmud Kot Bulk Oil Storage Installation, Multan
Mehmood Textile Mills, Karachi
Mehmood Textile Mills, Muzzafargarh
Mushtaq Textile Mills Extension and Renovation
N.P. Cotton Mills Hub Kotti. Sapphire Textile Mills
National Refinery Ltd.
Neelam Textile Mills
Nishat Textile Mills Ltd.
Nishat Textile Mills Ltd.
P.S.P.C Printing Work, Karachi
Pakistan Refinery Ltd.
Pakland Cement Ltd.
Pioneer Cement Ltd.
Rahim Baksh Textile Mills
Ravi Textile Mills
Saadi Cement Ltd.
Salmous Fibre Plant NWFP
Security Papers Ltd.
Shahpur Textile Mills
Siddiq Sons Denim Ltd.
Sui Southern Gas Company Building (SSGC)
Zenab Textile Mills

10 UNIVERSITIES & COLLEGES

Aga Khan University Hospital
Board Office Intermediate, Sukkur
College of Business Management, Karachi
Govt. Primary, Secondary and Intermediate School
Karachi Grammar School College
Lahore University of Management Sciences
Library Building and Physics Dept. Jamshoro
Mehran University of Engineering & Technology, Nawabshah
N.E.D University of Eng. & Tech. Karachi
Tando Jam Agricultural University, Sindh
Third Education Project, Sindh
University of Karachi

11 INFRASTRUCTURE: TRANSMISSION & DISTRIBUTION

AJK Grid Station and Transmission Lines
Double Circuit Transmission Line for water intake from Indus River to Jamshoro for Coal-Fired Power Plant
Grid Station for Pak Arab Refinery (PARCO) at Fazilpur & Bubak
Grid Station for Pioneer Cement, Khoshab
ICI Grid Station at Port Qasim.
KESC Development and Tariff Study
KESC Fifth Power Project: System Expansion and Augmentation
KESC Sixth Power Project: System Expansion and Augmentation.
Grid Station & Transmission Lines, KHI Airport
National Industrial Parks, Korangi Creek Industrial Park
NESPAC Karachi WAPDA Rural Electrification
OECF Project, Sindh.
Pakistan Studies for 7-year plan on Special Issues of Energy
WAPDA Rural Electrification, IBRD Project, Sindh

12 HOSPITALS AND CLINICS

Aga Khan University Hospital, Karachi
A.M.S. Behbehani Hospital, Karachi
Combined Military Hospital, Rawalpindi
National Institute of Cardiovascular Diseases (NICVD)
Shaukat Khanum Hospital and Research Centre, Lahore

13 HOUSING SCHEMES

Army Housing Scheme Islamabad.
Army Housing Scheme Karachi.
Army Housing Scheme Lahore
Govt. Teacher Cooperative Housing Society, Karachi
Sanghar Housing Scheme, Gawadar.

14 INTERNATIONAL PROJECTS - SHORTLIST

Airport Development Agency, Al-Kharj, Saudi Arabia
CEDA Water Treatment Plants and Biogas, Brazil
Fenerbache Stadium, Turkey
Lotus Motors, United Kingdom
Michelin Tires, Rio de Janeiro, Brazil
P3 Consulting for Solar PV, Zambia
Pre-Fabricated Flats, Complex, Ind. City Iraq
Summit Peak Housing Electrification Design, Trinidad and Tobago

US Hotels and Golf Resorts:

Mariott - Ritz Carlton - Hilton - Wyndham Hotels and Resorts -
Hard Rock Casino - Fitzgerald Casino - Anaheim Ducks (CA) -
Portland Trailblazers - Boston Bruins - Miami Dolphins

Governments:

State of Georgia - State of Florida - State of North Carolina - U.S.
Territory of Puerto Rico - Nigeria - China - Indonesia

FOUNDER SYED SIBTE JAFRI



L

ooking back at the past, it all appears like a dream come true. I was determined to organize a group for providing consultancy services in the field of Electrical

Engineering and allied services, which was at that time almost non-existent in the country.

Syed Sibte Ahmed Jafri was more than just an accomplished electrical and mechanical engineer. He was also a loving husband, father, and grandfather whose impact extended far beyond his professional pursuits. His children have followed in his footsteps, pursuing careers in finance, academia, and engineering, carrying on his legacy and making him proud.

Throughout his career, Syed Sibte Ahmed Jafri was known for his expertise in the field of power generation, and had extensive experience working with both captive and IPP projects, as well as self-generation and co-generation. He was a dedicated professional, with a strong commitment to continuous learning and professional development.

In addition to his professional achievements, Syed Sibte Ahmed Jafri was also an athlete and enjoyed watching films and reading mystery novels. He was a kind and loving man who will be deeply missed by all who knew him, especially his family who will always cherish the memories they shared together. May he rest in peace.

It had been the year 1971 - I had ventured into this field with many known and unknowns. On the face of it, this appeared to be easy sailing but in reality, it was a hard nut to crack. The problems were twofold; first being to get the prospective client's consultancy minded, and secondly to establish our foothold in this field.

Having mustered the teething problems of infancy, we were on track. With a dedicated and motivated team, we moved ahead inch by inch and finally succeeded in creating a place amongst the family of Consultants. The beginning was modest but with hard work and divine grace, we continued to receive and still receive projects of great significance and importance.

For the past 50 years, Jafri and Associates (J&A) has provided comprehensive services for a large number of projects. The Company was worked on several joint venture projects with Consultants from North America, Europe, and Japan.

In conclusion, I would like to express my gratitude and thanks to all our clients, associates, and organizations for their support and goodwill we have been receiving in the past and continue to receive even today. I hope that our clients will continue to patronize us in the years to come as they have done in the past.

I am confident that Jafri and Associates as a team is prepared to meet the challenges of the 21st century head-on.

**- Founder and former CEO,
Engr. Syed Sibte Jafri (late)**

JAFRI AND ASSOCIATES



IBRAHIM TRADE TOWER ROOM #
206, MAQBOOL
CO-OPERATIVE HOUSING
SOCIETY, SHARAE FAISAL,
KARACHI, PAKISTAN
92-21-34327671-4
INFO@JA.ASSOCIATES